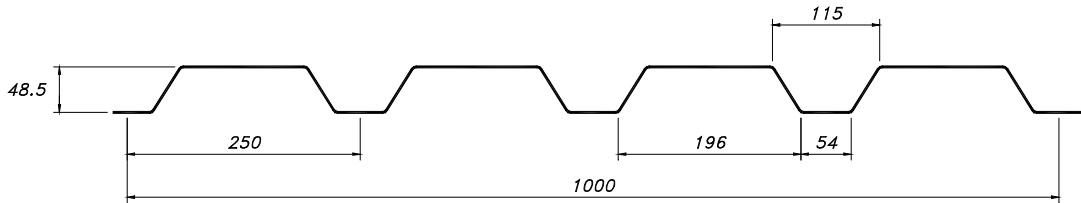


PRODUCT CERTIFICATE

SAB 50/1000



| Gauge | Weight |
|---------|------------------------|
| 0,63 mm | 6,18 kg/m ² |
| 0,75 mm | 7,36 kg/m ² |
| 0,88 mm | 8,64kg/m ² |
| 1,00 mm | 9,81 kg/m ² |

STEEL GRADE

S-320 GD+Z / ZM / ZA / AZ

SUSTAINABILITY

Environmentally relevant product information (MRPI and EPD) are published on www.sabprofiel.com.

QUALITY CONTROLE

We guarantee that the product has been produced according the valid standards and directives

REACTION TO FIRE

Incombustible, class A1 according to EN 13501-1.

SPANS

Depend on wind loads, deflection limitations and safety factors.

See our SAB-brochure for more information

STANDARDS

Production according ISO 9001, ISO 14001 and BES 6001

CE-marking and Declaration of Performance according EN 14782

Tolerances according EPAQ Quality Regulations for Profiles

Steel grade according EN 10346

Organic coating according EN 10169

IJsselstein, March 2018